

The High Line at the Rail Yards Press Kit

Friends of the High Line Leadership	2
The High Line at the Rail Yards Design Features	3 – 6
The High Line at the Rail Yards	7 – 9
Design Statement and Design Team	10 – 13



Joshua David
Co-Founder and President
Friends of the High Line

Joshua David co-founded Friends of the High Line with Robert Hammond in 1999 to save the High Line, a historic elevated railway on Manhattan’s West Side, then under threat of demolition. Under his leadership, Friends of the High Line has successfully advocated for the preservation and reuse of the High Line as a public park, transformed and opened the High Line structure to the public in three phases, become a fully licensed partner of the City of New York, and raised more than \$350 million in private and public funds for the park’s construction, endowment, and annual maintenance and operations.

Since opening in 2009, the High Line has become a leading model for community-driven adaptive reuse, and Joshua’s work on behalf of the park has been recognized by civic and professional groups worldwide. In 2010, he and Robert Hammond received the Rockefeller Foundation’s Jane Jacobs Medal for New Ideas and Activism, an award made to New Yorkers “whose work creates new ways of seeing and understanding New York City, challenges traditional assumptions, and creatively uses the urban environment to make New York City a place of hope and expectation.” In 2013, Joshua and Robert received the Vincent Scully Prize, which recognizes “exemplary practice, scholarship, or criticism in architecture, historic preservation, and urban design.”

A longtime Chelsea resident, Joshua is a member of the Advisory Council of Transportation Alternatives, which works to reclaim New York City’s streets from cars and to promote bicycling, walking, public transit. He is also a founding board member of + Pool, which is working to build the world’s first water-filtering floating swimming pool. Before co-founding Friends of the High Line, Joshua worked as a freelance magazine writer and editor for *Gourmet*, *Fortune*, *Travel + Leisure*, *Wallpaper**, and others.

The High Line at the Rail Yards

Design Features

Since the very beginning, the community has played an important role in shaping the development of the park. We continued this tradition for the High Line at the Rail Yards, hosting community input meetings throughout the initial design phase. The new design features reflect this community feedback, taking the best of what we've done before and adapting it to take advantage of a new and exciting landscape.

The following pages highlight the new design features within the High Line at the Rail Yards.

30th Street Grove

The 30th Street Grove is a serene gathering space near 30th Street. In addition to secluded seating and communal picnic areas, the Grove also houses an assortment of new design elements, including the peel-up sound bench – a chime feature for children – and the peel-up rocker.



View looking west along West 30th Street, just west of 10th Avenue
Rendering by James Corner Field Operations and Diller Scofidio + Renfro.
Courtesy of the City of New York and Friends of the High Line.

Rail Track Walk

These three linear walks – located in different areas along the High Line at the Rail Yards – expose the High Line’s rail tracks, evoking the High Line’s history as an active freight rail line. On these walks, visitors can interact with artifacts such as the rail “frog” and the rail switches, or rest in one of several alcove pockets of peel-up benches located throughout the pathways. Planting beds featuring Piet Oudolf’s naturalistic landscape border the pathways.



View looking west along West 30th Street, just west of 10th Avenue
Photograph by Timothy Schenck

11th Avenue Bridge

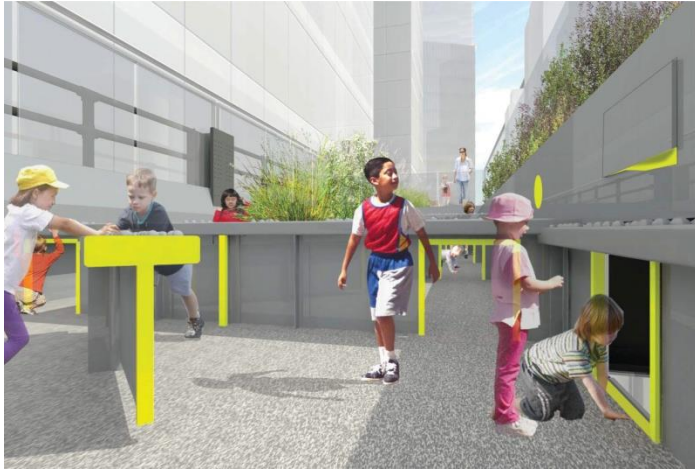
As the High Line runs west over 11th Avenue, the main pathway gradually slopes up about two feet, creating an elevated catwalk from which visitors can view the park, the cityscape, and Hudson River. Lush display gardens on either side of the catwalk will separate the main pathway from the more intimate linear bench seating running along the railing on either side of the bridge.



View looking south at 11th Avenue
Rendering by James Corner Field Operations and Diller Scofidio + Renfro.
Courtesy of the City of New York and Friends of the High Line.

Pershing Square Beams

Just west of 11th Avenue is a unique design feature for kids, the Pershing Square Beams. Here the High Line's concrete deck is stripped away, revealing the original framework of steel beams and girders. The structure itself is transformed into a series of sunken areas – coated in a silicone surface for safety – that children can run between, climb over, and play within. The area also includes a series of play elements developed exclusively for the High Line, such as a rotating beam, periscopes, a gopher hole, and talking and viewing tubes.



Detail of the Pershing Square Beams

Rendering by James Corner Field Operations and Diller Scofidio + Renfro.

Courtesy of the City of New York and Friends of the High Line.

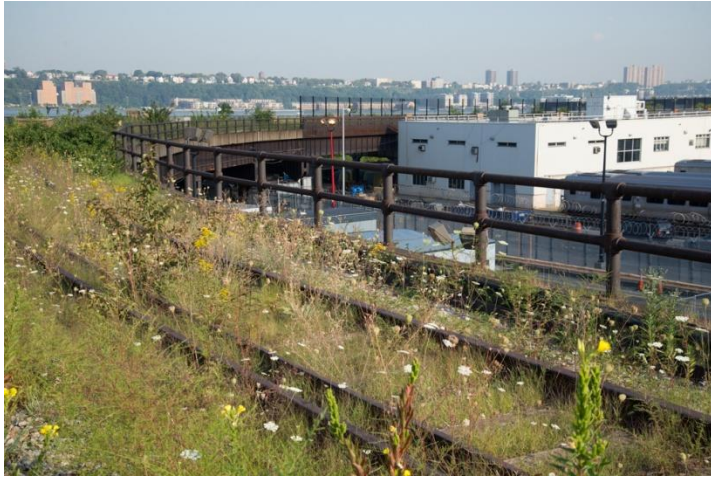
Interim Walkway

At the park's northernmost point is the Interim Walkway. This area features a simple path through the existing self-seeded plantings, celebrating the urban landscape that emerged on the High Line after the trains stopped running in 1980. Visitors can take in expansive views of the Hudson River and the cityscape, or relax in any of the four gathering spaces located in this area. Because the Interim Walkway is not lit at night, this part of the park closes earlier, at 6:00 PM.



View looking southeast at 12th Avenue, just north of West 30th Street

Photograph by Timothy Schenck



View looking northwest at 12th Avenue, just north of West 30th Street
Photograph by Timothy Schenck

The Interim Walkway currently features a site-specific High Line Art commission by Adrián Villar Rojas. The series of abstract sculptures, composed partly with seeds and compost from the High Line, will be on view through the summer of 2015.

<http://art.thehighline.org/project/adrianvillarrojas/>

The High Line at the Rail Yards

The High Line at the Rail Yards is the third and northernmost section of the High Line park. It stretches between West 30th and West 34th Streets to the south and north, and 10th and 12th Avenues to the east and west.

For more information on the High Line at the Rail Yards, including prominent design features, hours, and access points, visit our website: <http://www.thehighline.org/the-high-line-at-the-rail-yards>

Opening Date

Sunday, September 21, 2014

Access Points and Operating Hours

The following are new access points within the High Line at the Rail Yards:

West 30th Street & 10th Avenue (elevator and stair access)

West 30th Street & 11th Avenue (stair access)

West 34th Street and 11th Avenue (ramp access)

The High Line is open daily and hours vary by season. In the spring, between April 1 and May 31, the park is open from 7:00 AM to 10:00 PM. In the summer, between June 1 and September 30, the park is open from 7:00 AM to 11:00 PM. In the fall, between October 1 and November 30, the park is open from 7:00 AM to 10:00 PM. In the winter, between December 1 and March 31, the park is open from 7:00 AM to 7:00 PM. For the latest updates on park hours and operations, visit www.thehighline.org or follow @highlinenyc on Twitter.

Interim Walkway Hours

Because the Interim Walkway contains no lighting features, this section of the park will maintain different operating hours. From April through October, the Interim Walkway will open at 7:00 AM and close at 6:00 PM; from November through March, it will open at 7:30 AM and close at 6:00 PM.

Opening Week Activities

The opening of the High Line at the Rail Yards is a momentous occasion that brings us another step closer to fully realizing the vision of the High Line. We are celebrating the opening with an array of free public events and activities for both adults and children, including yoga classes, lunchtime concerts, and after-school kids programs.

For more information on Rail Yards Opening Week activities, visit our website: thehighline.org/activities

Opening Week activities are generously sponsored by CSX Transportation.

The Macy's 34th Street Shuttle will provide free bus service along 34th Street—between the High Line at the Rail Yards and Macy's Herald Square—on the weekends of September 20 to 21 and 27 to 28.



High Line Shop at the High Line at the Rail Yards

A satellite location of the High Line Shop will be located at 10th Avenue and 30th Street. The kiosk will be open Thursday through Sunday, from 9:30AM to 6:00PM.

High Line Food at High Line at the Rail Yards

Satellite locations of Brooklyn Soda Works and La Newyorkina will be located at 30th Street between 10th and 11th Avenue.

Design Team

The High Line at the Rail Yards was designed by the James Corner Field Operations (Project Lead), Diller Scofidio + Renfro, and Piet Oudolf – the same designers behind the first two sections of the High Line park – along with a team of structural engineers, lighting designers, electrical and mechanical experts, and others construction specialists.

Hudson Yards

Hudson Yards is a joint real estate development project managed by Related Companies and Oxford Properties Group. Though it borders the High Line at the Rail Yards, the park is not affiliated with the development.

For more information on Hudson Yards: <http://www.hudsonyardsnewyork.com/>

Phases of Rail Yards Construction

The construction of the High Line at the Rail Yards has been divided into three phases. The first phase opened to the public on September 21, 2014. The second phase, scheduled for completion in 2017, will include a build-out of the passage beneath Hudson Yard's first tower and the completion of the 10th Avenue Spur. The third and final phase of construction, which will focus on the western section of the High Line at the Rail Yards and the Interim Walkway, is dependent upon additional capital campaigns. The completion of the third phase will likely be 10 to 15 years from now.

High Line Design Statement

Inspired by the melancholic, “found” beauty of the High Line, where nature has reclaimed a once-vital piece of urban infrastructure, the design aims to re-fit this industrial conveyance into a post-industrial instrument of leisure. By changing the rules of engagement between plant life and pedestrians, our strategy of “agri-tecture” combines organic and building materials into a blend of changing proportions that accommodates the wild, the cultivated, the intimate, and the social. In stark contrast to the speed of Hudson River Park, the singular linear experience of the new High Line landscape is marked by slowness, distraction and other-worldliness that preserves the strange, wild character of the High Line, yet doesn’t underestimate its intended use and popularity as a new public space. This notion underpins the overall strategy – the invention of a new paving and planting system that allows for varying ratios of hard to soft surfaces that transition from high-use areas (100% hard) to richly vegetated biotopes (100% soft), with a variety of experiential gradients in between.

The design approach respects the character of the High Line itself: its singularity and linearity, its straightforward pragmatism, its emergent properties with wild plant life – meadows, thickets, vines, mosses, flowers – intermixed with ballast, steel, and concrete. Our solution is primarily threefold: first the paving system, built from linear concrete planks with open joints, specially tapered edges and seams that permit intermingling of plant life with harder materials. Less a pathway and more a combed or furrowed landscape, this intermixing creates a textural effect of immersion, strolling within rather than feeling distanced from. The selection and arrangement of grasses and plants further helps to define a wild, dynamic character, distinct from a typical manicured landscape and representative of the extreme conditions and shallow rooting depth. The second strategy is to slow things down, to promote a sense of duration and of being in another place, where time seems less pressing. Long stairways, meandering pathways, and hidden niches encourage taking one’s time. The third approach involved a careful sense of dimension of scale, minimizing the current tendency to make things bigger and obvious and seeking instead a more subtle gauge of the High Line’s measure. The result is an episodic and varied sequence of public spaces and landscapes set along a simple and consistent line – a line that cuts across some of the most remarkable elevated vistas of Manhattan and the Hudson River.

On High Line at the Rail Yards:

Representing one-third of the entire High Line, the High Line at the Rail Yards section is one of the most iconic stretches of the High Line, with expansive views of the Hudson River and the Midtown skyline. Here, we were challenged to continue to build upon the identity and success of the existing High Line, yet find a different way to respond to the radically new, 21st-century context of the future Hudson Yards development. The design takes advantage of the east-west orientation to the river, respects the existing wild landscape and industrial aesthetic, and introduces the next iteration of design elements. These include new varieties of peel-up benches, a series of Rail Track Walks and tree groves that encourage users to walk along and within the train tracks; a bridge over 11th Avenue with heightened views of the River; a unique children’s feature that transforms the High Line structure itself into a series of sunken areas that children can run between, climb over and play within; and the Interim Walkway, a temporary walkway built over the existing self-seeded landscape featuring large-scale furniture at key locations and dramatic views of the Hudson River. This latter section along 12th Avenue is perhaps the most authentically subtle design, where the “original” High Line landscape, with its self-sown grasses and flowers emerging from old tracks, wood ties, and stone ballast, remains intact.

– James Corner Field Operations, Landscape Architects

THE DESIGN TEAM

James Corner Field Operations

James Corner is a registered landscape architect and urban designer, and Founder and Director of James Corner Field Operations, where he oversees the production of all design projects in the office. His design focus is on the innovative advancement of vibrant, imaginative, and dynamic forms of social space and public realm in the city. His work has been recognized with the National Design Award and the American Academy of Arts and Letters. He is a Professor in the Department of Landscape Architecture at the University of Pennsylvania School of Design, and has lectured and exhibited work around the world. He was educated at Manchester Metropolitan University, England, and the University of Pennsylvania.

Major projects include the High Line, New York City; Fresh Kills Park, Staten Island; Santa Monica's Tongva Park; Race Street Pier, Philadelphia;; Queen Elizabeth Olympic Park, London; Chicago's Navy Pier; Shelby Farms Park, Memphis; Miami Museum Plaza; Nicollet Mall, Minneapolis; Seattle's Central Waterfront; and the Tsim Sha Tsui Waterfront in Hong Kong. He is author of *The Landscape Imagination* (Princeton Architectural press, 2014), *Recovering Landscape* (Princeton Architectural press, 1999), and *Taking Measures Across the American Landscape* (Yale University Press, 1996).

Lisa Tziona Switkin is a Principal at James Corner Field Operations with a B.A. in Urban Planning from the University of Illinois and M.L.A. from the University of Pennsylvania. In 2007, she was awarded the prestigious Rome Prize in Landscape Architecture at the American Academy in Rome. Lisa is currently overseeing many of the practice's complex projects, including the High Line at the Rail Yards and South Street Seaport in New York City; a quarter-of-a-mile of waterfront at the Domino Sugar Factory in Brooklyn; and the one-mile Nicollet Mall pedestrian and transit corridor in Minneapolis. Lisa led the design of the first sections of the High Line, the recently opened Tongva Park in Santa Monica, and the Race Street Pier in Philadelphia.

Lisa has taught graduate level design studios in the Department of Landscape Architecture at the University of Pennsylvania and has lectured at universities, symposiums, foundations, and institutions around the world.

Isabel Castilla is a Senior Associate at James Corner Field Operations with a B.A. in Architecture from the University of Puerto Rico and M.L.A. and M. ARCH from the University of Pennsylvania. Educated in both architecture and landscape architecture, Isabel brings exceptional attention to design creativity, detailing and construction implementation. She is currently project manager in charge of design for the High Line at the Rail Yards. Isabel also led the design of the Miami Museum Plaza, oversaw design and construction of two high end residential projects in Manhattan, led the design of a 188-hectare resort in Brazil, worked on the master plan and vision for a 128-hectare decommissioned defense site in Melbourne, Australia, and was a senior designer on the Columbia University Muscota Marsh, a new waterfront park in Manhattan.

Diller Scofidio + Renfro

DILLER SCOFIDIO + RENFRO is a 35-person interdisciplinary design studio that straddles urban planning, architecture, interior design, product design, visual arts, and performing arts. Founded in 1979 by Elizabeth Diller and Ricardo Scofidio, the work of the studio has grown to include major projects of

cultural and civic significance. DS+R has received some of the most prestigious awards in architecture and the visual arts including the National Design Award from the Smithsonian, the Brunner Prize from the American Academy of the Arts and Letters and the recent induction into the American Academy of Arts and Sciences. From our offices in New York City, we have completed projects around the world, including institutional master planning, museums and civic buildings, housing and residential design, permanent site-specific installations, and theater and performance pieces. Our broad range of skills, combined with our commitment to bridge architecture with issues of contemporary culture, has led to the recognition of our studio by the MacArthur Foundation with a “genius” award, the first given in the field of architecture. We are also the youngest architectural firm to have a retrospective of our work mounted by a major US museum, the Whitney Museum of American Art in 2003. The studio is currently headed by three partners, all of whom work collaboratively on the design of each project in the studio.

Elizabeth Diller, a founding member of DS+R, was born in Lodz, Poland. She attended The Cooper Union School of Art and received a Bachelor of Architecture from the Cooper Union School of Architecture. Ms. Diller is Professor of Architecture at Princeton University.

Ricardo Scofidio, RA, a founding member of DS+R, was born in New York City. He attended The Cooper Union School of Architecture and received a Bachelor of Architecture from Columbia University. Mr. Scofidio is Professor of Architecture at Cooper Union.

Charles Renfro, RA, joined the studio in 1997 and became partner in 2004. A native of Texas, he is a graduate of Rice University and holds a Master of Architecture degree from Columbia University, where he has been teaching since 2000.

Matthew Johnson, a Senior Associate at DS+R, is a native of Michigan. He is a graduate of the University of Michigan and holds a Master of Architecture from Princeton University. While at DS+R, Matthew has worked on various public art installations, such as Travelogues, Media Cut and Pure Mix—The Snow Show, and projects including Blur, Eyebeam Museum of Art and Technology, Facsimile, and Lincoln Center’s Infospace.

Piet Oudolf: Planting Designer

Piet Oudolf is a Netherlands-based planting designer, nurseryman and author. He is a leading figure of the "New Perennial" or "New Wave Planting" movement, using bold drifts of herbaceous perennial plants and grasses which are chosen for their structure as much as for their flower color. He is the author of several books, including *Gardening With Grasses* (1998) (with Michael King and Beth Chatto), *Dream Plants for the Natural Garden* (2000) and *Planting the Natural Garden* (2003) (both with Henk Gerritsen), *Designing With Plants* (1999) and *Planting Design: Gardens in Time and Space* (2005) (both with Noel Kingsbury). His list of design projects includes Battery Park (New York, 2003), ABN Amro Bank (Netherlands, 2000), Hoogeland (Netherlands, 2001), the Lurie Garden, a gigantic green roof over the car park of Millennium Park (Chicago, 2003 - with Kathryn Gustafson) and Scampston Hall (England, 2002-2003). His own garden, at Hummelo, near Arnhem in the Netherlands, makes reference to traditional Dutch gardens in its use of neatly clipped evergreen hedges.

BuroHappold: Structural / MEP Engineering

Craig Schwitter has over 17 years of experience in the engineering design of complex buildings including performing arts, stadia, transportation, and cultural projects. With BuroHappold for the past 10 years, Mr. Schwitter has been involved in major international projects around the world. Mr. Schwitter founded the first North American office of BuroHappold in 1998. Since then the region has grown to over 200 staff based in multiple office locations including New York, Los Angeles, Boston, and Toronto. The North American offices offer a full spectrum of engineering services including structural, MEP, and façade, special projects engineering, lighting design, sustainability consulting services, and geo-technical services. With a focus on integrated engineering and the use of appropriate technology, Mr. Schwitter has played a hands-on role in ensuring a high level quality in Buro Happold's projects and breakthrough innovations on recent high-profile engineering commissions with the firm.

Robert Silman Associates: Structural Engineering/ Historic Preservation

Joseph F. Tortorella, PE, Vice President: Since joining Robert Silman Associates in 1979, Mr. Tortorella has supervised projects of new construction, alteration, renovation, adaptive reuse, sustainable design, and historic preservation. His hands-on approach to project management on all phases of design and production as well as through construction and his attention to detail has led to his expertise in project quality assurance. Mr. Tortorella is active in industry organizations. He is Vice-Chair of Working Commission 8 (Rehabilitation of Structures) of the International Association for Bridge and Structural Engineering (IABSE). He is also a member and Past-President of the Structural Engineers Association of New York (SEAoNY) and is on the Executive Board of New York New Visions in the evaluation of the designs for the redevelopment of the World Trade Center Site. He also serves on the board of the Center for Architecture Foundation, through which he previously taught primary school children through the Learning by Design program.

L'Observatoire International: Lighting

Herve Descottes established the lighting design and consulting firm L'Observatoire International in New York City in 1993. L'Observatoire's team comprises an international cadre of lighting designers culled from a variety of disciplines. Formally trained lighting designers, architects, interior designers, engineers, and artists have been brought together to pursue the common aim of lighting the built environment.

Emphasizing a collaborative effort, the firm provides lighting design to such disparate spatial expressions as architecture, urban, landscape, and fine art projects. Advancing contextualism and specificity, L'Observatoire implicates itself in each stage of the design process to provide aesthetic and technical solutions particular to the needs of each client.

Pentagram Design, Inc: Signage

Paula Scher studied at the Tyler School of Art in Philadelphia and began her graphic design career as a record cover art director at both Atlantic and CBS Records in the 1970s. In 1984 she co-founded Koppel & Scher, and in 1991 she joined Pentagram as a partner. Paula has developed identity and branding systems, promotional materials, environmental graphics, packaging, and publication designs for a wide range of clients.

Paula is a member of the Art Directors Club Hall of Fame and a past recipient of the Chrysler Award for Innovation in Design. She has served on the national board of the American Institute of Graphic Arts (AIGA), and in 2001 she was awarded the profession's highest honor, the AIGA Medal, in recognition of her distinguished achievements and contributions to the field. She holds honorary doctorates from the Corcoran College of Art and Design and the Maryland Institute College of Art, and she is a member of the Alliance Graphique Internationale (AGI). She has served on the board of directors of The Public Theater, and in 2006 she was named to the Art Commission of the City of New York.

Her work has been exhibited all over the world and is represented in the permanent collections of the Museum of Modern Art and the Cooper-Hewitt National Design Museum in New York, the Library of Congress in Washington, D.C., the Denver Art Museum, the Museum für Gestaltung Zürich, and the Bibliothèque Nationale de France and the Centre Georges Pompidou in Paris.